

Tech Tip Tuesday (October 14, 2025)



October is *National Cyber Security Awareness Month*

Passwords? That's so last year. No, let's try a passphrase.

A strong password doesn't have to be hard to remember — it just needs to be long and unique. Combine a few random words to create something easy to recall but nearly impossible to guess, like:

--> *cactus-rainbow-ocean*

--> *library-taco-galaxy*

Avoid personal info, and don't reuse passwords across accounts.

Tip: The longer the phrase, the stronger the protection.

Check out [Google's Password Tips](#)

Password Strength Chart		SANDSTORM ^{IT} <small>power on</small>
123456 <small>Top 10,000 password</small>	0.20 milliseconds	Unsafe
qwerty123456 <small>Longer "common" password</small>	13 hours	Unsafe
ITFunSom3times <small>Longer password with numbers</small>	48 thousand years	Risky
IT!\$fun\$0m3times! <small>Longer password with numbers and special characters</small>	13 trillion years	Good
imusingalongpasswordtoday <small>Even Longer password</small>	913 trillion years	Better
imu\$inga1ongpa\$\$word+oday! <small>Even Longer password with numbers and special characters</small>	2 octillion years	Best

Please Note: These passwords are for demonstration purposes ONLY and are not to be used.



END OF THE PASSWORD

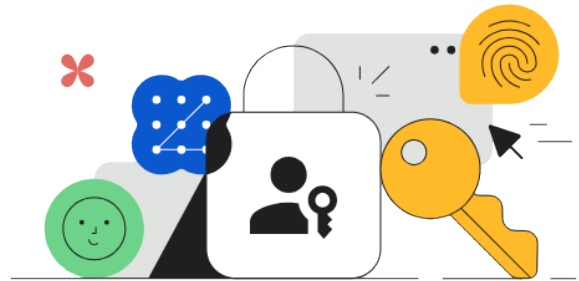
A **passkey** is a secure, passwordless way to sign in to Google.

Instead of typing a password, you use something you **already have** — like your phone, fingerprint, or device PIN — to prove it's really you.

Passkeys protect against phishing and make sign-ins faster.

You can set one up in your Google Account settings:

[Create a Passkey for Google](#)



Blaze King

Director of Information Technology

Email: bking@ulusd.org

Website: ulusd.org

Location: [750 Old Lucerne Road, Upper Lake, CA, USA](#)

Phone: [707-275-9139](tel:707-275-9139)

Revision #2

Created 2025-10-14 15:21:13 UTC by Blaze King

Updated 2025-10-14 16:02:29 UTC by Blaze King